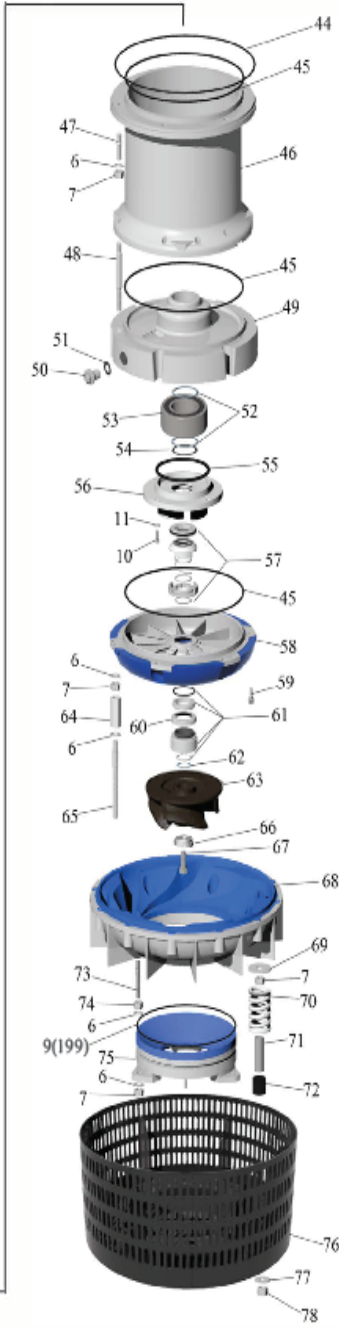
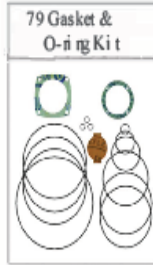
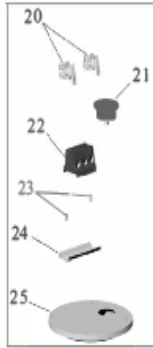


APEX

HEAVY DUTY
MODEL SD150HV 30HP HIGH VOLUME



Item #	Description	Item Details	Qty
30-1	Handle	SS	1
30-2	Bushing	Flanged Bushing SS	2
30-3	Washer	16mm SS	2
30-4	Bolt	16mm x 35mm SS	2
30-5	Bolt	12mm x 60mm SS	6
30-6	Washer	12mm SS	36
30-7	Nut	12mm SS	27
30-8	Junction Cover	Aluminum	1
30-9-219.3mm	O-Ring	219.9mm x 5.7mm B-70	1
30-9-199.3mm	O-Ring	199.3mm x 5.7mm B-71	1
30-10	Bolt	8mm x 25mm SS	10
30-11	Washer	8mm SS	10
30-12	Terminal Board Assembly	Complete With Items: 20,21,22,23,24,25	1
30-13	Gasket	Fiber	1
30-14	Ground strip	SS	1
30-15	Upper Bearing Carrier	Aluminum	1
30-16	Stud	12mm x45mm S	2
30-17	Cable Entry	Includes Clamps/Screws	1
30-18	Washer	28mm To 30mm Cable	2
30-19	Grommet	28mm To 30mm Cable	1
30-20	End Stop	Polyamide 66	2
30-21	Wire Pull Through	Stator	1
30-22	Terminal Block	Polyamide 66	1
30-23	Screw	4mm x 10mm SS	2
30-24	Din-Rail	Din-Rail SS x 3"	1
30-25	Terminal Mount Plate	Aluminum	1
30-26	Power Cable	4/3/GGC 50FT	50
30-27	Fiber Protector	Fiber	1
30-28	O-Ring	79mm x 5.7mm B-70	1
30-29	Bearing Holder	Steel	1
30-30	Upper Bearing	SKF 6208/C3	1
30-31	Rotor/Complete	Steel/SS Shaft	1
30-32	Impeller Key	8mm x 7mm x 40mm SS	1
30-33-6" NPT	Discharge 6" NPT	Aluminum Female NPT	1
30-33-4" NPT	Discharge 4" NPT	Aluminum NPT(Optional)	
30-33-4" VIC	Discharge 4" Vic	Aluminum VIC (Optional)	
30-34	Stud	12mm x 55mm SS	4
30-35	Gasket	Fiber	1
30-36	Washer	10mm SS	18
30-37	Bolt	10mm x 25mm SS	6
30-38	Nut	10mm x SS	12
30-39-Oil CVR	Inspection Cover, Oil	Aluminum	2
30-39-Stator CVR	Inspection Cover, Stator	Aluminum	1
30-40	O-Ring	32.5mm x 5.7 B-70	3
30-41	Outer Housing Discharge	Aluminum	1
30-42	Stud	10mm x 75mm SS	12
30-43-3/60/460v	Stator	3/60/460 Volt	1
30-43-3/60/600v	Stator	3/60/600 Volt(Optional)	
30-43-3/50/415v	Stator	3/50/415 Volt(Optional)	
30-43-3/50/1000v	Stator	3/50/1000 Volt(Optional)	
30-44	O-Ring	399.3mm x 5.7mm B-70	1
30-45	O-Ring	279mm x 5.7mm B-70	3
30-46	Stator Housing	Aluminum	1
30-47	Stud	12mm x 50mm SS	6
30-48	Stud	12mm x 120mm SS	6
30-49	Lower Bearing Cover	Aluminum	1
30-50	Inspection Screw	SS	3
30-51	O-Ring	19.2mm x 3.0mm B-70	3
30-52	Support Washer	Steel	2
30-53	Lower Bearing	SKF 5311 A-2RS1/C3	1
30-54	Retaining Ring	50.8mm ID Steel	1
30-55	O-Ring	119.5mm x 5.7mm B-70	1
30-56	Bearing Cover	Aluminum	1
30-57	Upper Seal	TC/TC	1
30-58	Oil Housing Cover	Polyurethane	1
30-59	Screw/Socket Head	10mm x 25mm SS	3
30-60	Seal Protector	Rubber/SS	1
30-61	Lower Seal	TC/TC	1
30-62-0.3mm	Adjusting Washer Impeller	0.03mm SS	2
30-62-1.5mm	Adjusting Washer Impeller	1.5mm SS	2
30-63-HV-SS-60Hz	Impeller HV 17-4	Code 232 60hz	1
30-63-HV-SS-50Hz	Impeller HV 17-4	Code 232 50hz(Optional)	
30-64	Nut	12mm SS Coupling	6
30-65	Stud	12mm x 140mm SS	6
30-66-Washer	Washer (Impeller)	Stainless Steel Impeller Washer	1
30-66-Nut	Nut(Impeller)	Stainless Steel Impeller Nut	1
30-67	Bolt Socket/Head	12mm x 40mm SS	1
30-68-HV	Diffuser Ring HV	Polyurethane	1
30-69	Washer	12mm x 50mm SS	6
30-70	Spring	SS	6
30-71	Distance Tube	SS	6
30-72	Rubber Sleeve	Rubber	6
30-73	Stud	12mm x 80mm SS	3
30-74	Nut	12mm 1/2 Nut SS	3
30-75-HV	Lower Diffuser HV	Polyurethane	1
30-76	Intake screen	Stainless Steel	1
30-77	Washer	12mm x 36mm SS	6
30-78	Nut	12mm x Fiber Lock SS	6
30-79	Gasket & O-Ring Kit	Includes Items: 9,13,27,28,35,44,45 & 55	1
30-80	Basic Repair Kit	Includes Items: 30, 53, 57,60,61 & 79	1