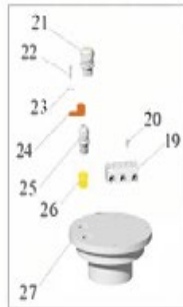


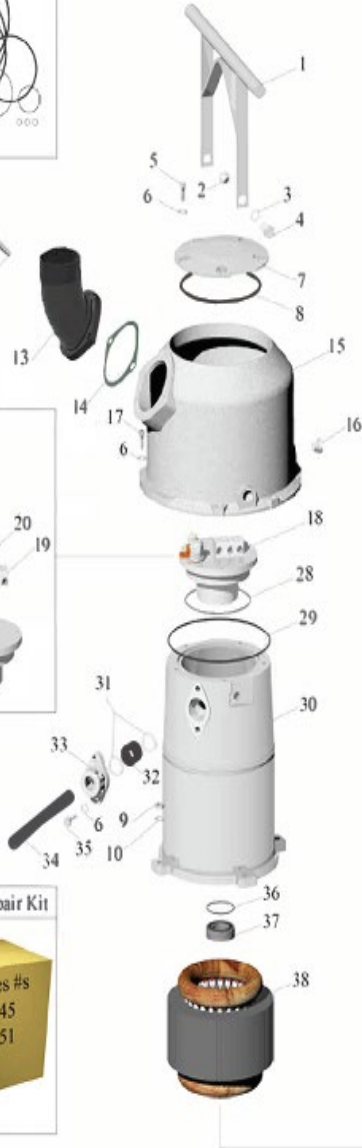


MODEL SD100HV 10 HP HIGH VOLUME

74 O-ring Kit



75 Basic Repair Kit



Item #	Description	Item Details	Qty
8.2-1	Handle	SS	1
8.2-2	Bushing	Flanged SS	2
8.2-3	Washer	12mm SS	2
8.2-4	Bolt	12mm x 20mm SS	2
8.2-5	Bolt	8mm x 20mm SS	5
8.2-6	Washer	8mm SS	15
8.2-7	Junction Cover	Aluminum	1
8.2-8	O-Ring	139.3mm x 5.7mm B-70	1
8.2-9	Nut	10mm SS	9
8.2-10	Washer	10mm SS	13
8.2-11	Stud	10mm x 40mm SS	2
8.2-12	Flange Ring	Aluminum	1
8.2-13-3" NPT	Discharge 3" NPT	Standard (Aluminum)	1
8.2-13-3" VIC	Discharge 3" Vic	Optional (Aluminum)	
8.2-13-4" NPT	Discharge 4" NPT	Optional (Aluminum)	
8.2-13-4" VIC	Discharge 4" Vic	Optional (Aluminum)	
8.2-14	Seal Ring	Rubber	1
8.2-15	Outer Housing Discharge	Aluminum	1
8.2-16	Inspection Plug	Durlon	3
8.2-17	Screw/Socket Head	8mm x 35mm SS	8
8.2-18	Terminal Board/Bearing Housing	Complete With Items: 18,19,20,21,22,23,24,25,26 & 27	
8.2-19	Terminal Block	Ceramic	1
8.2-20	Screw	3mm x 20mm SS	2
8.2-21	Wire Pull Through	Stator	1
8.2-22	Bolt	6mm x 20mm SS	4
8.2-23	Washer	6mm SS	4
8.2-24	Ground Lug	Brass	1
8.2-25	Wire Pull Through	Terminals (Optional)	
8.2-26	Plug	Brass	1
8.2-27	Terminal Board/Bearing Housing	Aluminum	1
8.2-28	O-Ring	120mm x 3mm B-70	1
8.2-29	O-Ring	194.3mm x 5.7mm B-70	1
8.2-30	Stator Housing	Aluminum	1
8.2-31	Washer	20mm To 22mm Cable	2
8.2-32	Grommet	20mm To 22mm Cable	1
8.2-33	Cable Entry Assembly	Includes Clamps/Screws	1
8.2-34	Power Cable 50'	10/5 SOOW	50
8.2-35	Bolt	8mm x 25mm SS	2
8.2-36	O-Ring	52.5mm x 3mm B-70	1
8.2-37	Upper Bearing	6205/2RD/C3/SKF	1
10-38-3/60/460	Stator(Standard)	3/60/460 Volt	1
10-38-3/60/600	Stator(Optional)	3/60/600 Volt(Optional)	
10-38-3/50/415	Stator(Optional)	3/50/415 Volt(Optional)	
10-38-3/50/1000	Stator(Optional)	3/50/1000 Volt(Optional)	
8.2-39	Retaining Ring	23.2mm SS	1
8.2-40	Rotor/Complete	Steel/SS Shaft	1
8.2-41	Key	6mm x 6mm x 35mm SS	1
8.2-42	Bolt	6mm x 12mm SS	3
8.2-43	Bearing Cover	Aluminum	1
8.2-44	Bearing Spacer	25mm x 35mm SS	2
8.2-45	Lower Bearing	5305/2RS	1
8.2-46	O-Ring	194.3mm x 5.7mm B-70	1
8.2-47	Lower Bearing Housing	Aluminum	1
8.2-48	O-Ring	10.3mm x 2.4mm B-70	3
8.2-49	Inspection Screw	SS	3
8.2-50	Wear Protector	Rubber/SS	2
8.2-51	Upper/Lower Seal	Tc/Tc	2
8.2-52	O-Ring	199.3mm x 5.7mm B-70	1
8.2-53	Oil Housing	Polyurethane	1
8.2-54	Screw/Flat Head	6mm x 16mm SS	4
8.2-55-HV	Diffuser RingHv	Polyurethane	1
8.2-56	Stud	10mm x 212mm SS	4
10-57-HV	Impeller HV Trimmed	Code 60Hz SS	1
8.2-58	Adjusting Washer Impeller	0.03mm SS	2
8.2-59	Adjusting Washer Impeller	1.5mm SS	2
8.2-60	Impeller Nut/Puller	SS	1
8.2-61	Lock Washer Impeller/Special	SS	1
8.2-62	Washer Impeller	SS	1
8.2-63	Bolt Impeller	8mm x 45mm SS	1
8.2-64	Stud	10mm x 40mm SS	3
8.2-65	Nut/Jam	10mm SS	3
8.2-66	Nut/Coupler	10mm x 26mm SS	4
8.2-67	Washer	20mm x 35mm SS	4
8.2-68	Spring	SS	4
8.2-69	Distance Tube	SS	4
8.2-70-HV	Lower Wear Plate HV	Polyurethane	1
8.2-71	Intake Screen	Stainless Steel Screen	1
8.2-72	Washer	10mm x 30mm SS	4
8.2-73	Nut	10mm x Fiber Lock SS	4
8.2-74	O-Ring Kit	Includes Items: 8,14,28,29,36,46,48 & 52	
8.2-75	Basic Repair Kit	Includes Items: 37,45,50,51 & 74	

